

# DISCIPLINE POLICY

## PAHRANAGAT VALLEY MIDDLE/HIGH SCHOOL

2017-18

In forming Pahrnagat Valley Middle/High School's Discipline Policy, the following input, procedures, and laws were considered:

- A. Parent Advisory committee with Reviews
- B. A policy which matches the District Policy
- C. A policy which is connected with the Nevada Revised Statutes in regards to schools.
- D. The NIAA discipline policy
- E. Bullying/Cyber Bullying

This policy is included in the Student Handbook. The policy also reflects and considers the District and School Mission Statement and has at its core the "learning experience" of the student, and how that experience will help them in their adult life, as well as being in place to protect students and the school.

### **Bullying/ Cyberbullying**

- a) Pahrnagat Valley High/Middle School recognizes that a school that is physically and emotionally safe and secure for all students promotes good citizenship, increases student attendance and engagement, and supports academic achievement. To protect the rights of all students and groups for a safe and secure learning environment, the board of education prohibits acts of bullying, harassment, and other forms of aggression and violence. Bullying or harassment, like other forms of aggressive and violent behaviors, interferes with both a school's ability to educate its students and a student's ability to learn. All administrators, faculty, staff, parents, volunteers, and students are expected to refuse to tolerate bullying and harassment and to demonstrate behavior that is respectful and civil. It is especially important for adults to model these behaviors (even when disciplining) in order to provide positive examples for student behavior.
- b) "Bullying" or "harassment" is any gesture or written, verbal, graphic, or physical act (including electronically transmitted acts – i.e., cyberbullying, through the use of internet, cell phone, personal digital assistant (pda), computer, or wireless handheld device, currently in use or later developed and used by students) that is reasonably perceived as being dehumanizing, intimidating, hostile, humiliating, threatening, or otherwise likely to evoke fear of physical harm or

emotional distress and may be motivated either by bias or prejudice based upon any actual or perceived characteristic, such as race, color, religion, ancestry, national origin, gender, sexual orientation, gender identity or expression; or a mental, physical, or sensory disability or impairment; or by any other distinguishing characteristic, or is based upon association with another person who has or is perceived to have any distinguishing characteristic. Bullying and harassment also include forms of retaliation against individuals who report or cooperate in an investigation under this policy. Such behaviors are considered to be bullying or harassment whether they take place on or off school property, at any school-sponsored function, or in a school vehicle or at any time or place where a child's imminent safety or over-all well-being may be at issue.

- c) "Bullying" is conduct that meets all of the following criteria:
- is reasonably perceived as being dehumanizing, intimidating, hostile, humiliating, threatening, or otherwise likely to evoke fear of physical harm or emotional distress;
  - is directed at one or more pupils;
  - is conveyed through physical, verbal, technological or emotional means;
  - Substantially interferes with educational opportunities, benefits, or programs of one or more pupils;
  - adversely affects the ability of a pupil to participate in or benefit from the school district's or public school's educational programs or activities by placing the pupil in reasonable fear of physical harm or by causing emotional distress; and,
  - is based on a pupil's actual or perceived distinguishing characteristic (see above), or is based on an association with another person who has or is perceived to have any of these characteristics.
- d) "Harassment" is conduct that meets all of the following criteria:

- is reasonably perceived as being dehumanizing, intimidating, hostile, humiliating, threatening, or otherwise likely to evoke fear of physical harm or emotional distress;
  - is directed at one or more pupils;
  - is conveyed through physical, verbal, technological or emotional means;
  - Substantially interferes with educational opportunities, benefits, or programs of one or more pupils;
  - adversely affects the ability of a pupil to participate in or benefit from the school district's or public school's educational programs or activities because the conduct, as reasonably perceived by the pupil, is so severe, pervasive, and objectively offensive as to have this effect; and,
  - is based on a pupil's actual or perceived distinguishing characteristic (see above), or is based on an association with another person who has or is perceived to have any of these characteristics.
- e) The scope of this policy includes the prohibition of every form of bullying, harassment, and cyberbullying/harassment, whether in the classroom, on school premises, immediately adjacent to school premises, when a student is traveling to or from school (portal to portal), or at a school-sponsored event, whether or not held on school premises. Bullying or harassment, including cyberbullying/harassment, that is not initiated at a location defined above is covered by this policy if the incident results in a potentially material or substantial disruption of the school learning environment for one or more students and/or the orderly day-to-day operations of any school or school program.

## THREE LEVELS OF DISCIPLINE

### **Level One: Discipline Begins with Parents and Students**

- A) Appropriate Language
- B) Appropriate Dress
- C) Attendance
- D) Tardiness
- E) Behavior

The first level of discipline begins with parents and the students themselves. Appropriate language, dress, and attendance are the first step towards avoiding the discipline processes that the school must provide. The school wants to support parents and families in their desire to educate their student. The school would like to be involved in the discipline of each student in a minimal way. If each family would discuss what constitutes appropriate language, dress, attendance, tardiness, and behavior in a school setting then discipline could largely remain in the parent's hands.

### **Level Two: Teachers and Staff**

- A) Meeting with Parents and Students
- B) Behavior Grades (citizenship)
- C) Ineligibility with School Activities

Teachers are responsible for discipline in their respective classrooms, in the halls and generally on school property or at school functions. Teachers have a clearly thought out personal discipline philosophy that distinguishes between classroom rules and classroom guidelines, and the consequences or low-level interventions for both. A variety of tactics are used in order to meet the needs of differing students and classroom situations. Any classroom discipline will be documented by the teacher before referring the student to the principal's office (see attached forms—"Possible Consequences" chart and "Discipline Flow Chart").

### **Level Three: School Level-Referral to Principal**

In accordance with NRS 392.4645, when teachers or staff members have tried all of their discipline methods with no success, the student is to be referred to the principal. It is at this level that more stringent consequences

will be assigned. The hope is that students will solve the problem with the teacher and not need to be referred to the office. The principal, depending upon the offense, has several levels of discipline that can be utilized. These levels generally go in the following order:

- A) Principal warning – can include:
  - 1. Principal meets with the teacher involved
  - 2. Action Plan
  - 3. Parent Meeting
  - 4. After School detention
  - 5. Consequence
  - 6. Counselor Referral
- B) In School Suspension – One Day
- C) In School Suspension – Two Days
- D) Out School Suspension – One Day
- E) Out School Suspension – Two Days
- F) Out School Suspension – Three Days
- G) Out School Suspension – Ten Days
- H) Referral to Alternative Education
- I) Expulsion by board

The following behaviors are grounds for immediate referral to principal:

- 1. Fighting
- 2. Blatant defiance of authority
- 3. Abusive extreme vulgarity directed toward staff members or other students
- 4. Sexual Harassment
- 5. Vandalism to school properties
- 6. Threatening another student(s)

The following behaviors are grounds for immediate school suspension:

- 1. Use, possession, or sale of explosives
- 2. Physical assault/battery/fighting with fists
- 3. Possession of dangerous weapon or use of object to inflict harm.
- 4. Use, possession, or sale of a controlled substance
- 5. Deemed habitual disciplinary problem

According to NRS 392.466, any student who shows habitual discipline problems can be referred for permanent expulsion or home schooling. In

accordance with 392.4647, discipline committee to determine review to determine the temporary alternative placement of pupil(s) are:

Principal: Mike Strong

Administrative Assistant: Mike Sparrow

Administrative Assistant: Tory Frehner

Counselor: Emilee Frehner

Pupil's parent/guardian

## **INTEGRATED INVOLVEMENT IN DISCIPLINE**

- 1. All areas of school activities are involved in integrated discipline processes, including but not limited to:**
  - A. Transportation
  - B. Athletics
  - C. Drill Team
  - D. Cheerleading
  - E. FFA
  - F. FCCLA
  - G. FBLA
  - H. VICA
  
- 2. Involvement with Parents**
  - A. Meeting with parents that are frequent and involve the parent as part of the discipline team.
  - B. Parent training
  
- 3. Involvement with law enforcement**
  - A. Use of school officers (truancy, tardiness, warnings)
  - B. Use in the prevention of drugs (drug dog, etc.)
  - C. Use in the Critical Incident Procedures
  
- 4. Individual Discipline and Behavior Plans**
  - A. Meet with parents/students/staff to discuss behavior goals
  - B. Emphasis on improvement and rewards for that improvement
  
- 5. Staff Training/ Staff Meeting**
  - A. Present new ideas of classroom management at each staff meeting
  - B. Review student behaviors enabling staff to work as a team



## **Pahranagat Valley High School Student Law, District Policies, and Handbook Comparisons with regard to the discipline policy.**

### **Weapons:**

Handbook: P. 16. Items capable of inflicting bodily harm can't be carried to, from, or used at school. CONSEQUENCES: Suspension or Expulsion.

District Policy Manual: P. 25. Weapons on the list. Consequences: first time possible expulsion for a period of time. Repeated offense: Possible permanent expulsion.

NRS Statues: NRS 392.466: Statues call for suspension or expulsion of pupil for batter on employee of school, possession of firearm, or dangerous weapons, sale or distribution of controlled substances or status of a habitual disciplinary problem. First occurrence: suspension or expelled for at least one semester. (Alternative or home schooling for that period of time)  
Second occurrence: Can be permanently expelled.

Firearm: First occurrence -1 year expelled

Second occurrence –Permanently expelled

NRS 393.410: Dangerous weapon list (knife is listed if blade is 2 inches long or longer.)

### **Battery and Assault:**

Handbook: P. 16. Intentionally or knowingly threatening another with bodily injury, Unlawful attempt, coupled with present ability to commit violent injury.

Consequences: Expel or Suspend.

District: P. 24: Expel

NRS Statues: 200.278: 62.930: If a child is currently enrolled unlawfully and causes or attempts to cause serious bodily injury; the court shall provide information to that school.

200.471: Unlawful attempt, coupled with ability to commit a violent injury on the person of another.

392.480: Disturbance of school; threatening or assaulting pupil or school employee; interference with persons peaceably assembled for school.

All of the above are a misdemeanor.

### **Sexual Harassment:**

NRS Statutes: 200.650: May include, but is not limited to, unwelcome sexual advances, requests for sexual favors and other verbal, visual, or physical conduct of a sexual nature from students, peers, or any other person on school property or at a school sponsored event when the conduct is sufficiently severe, persistent, or pervasive to limit a student's ability to participate in or benefit from an educational program or to create an intimidating, hostile, or offensive educational or work environment.

Consequences: Investigation by principal, suspension, expulsion, referral to police if appropriate.

### **Habitual Disciplinary Problem:**

Handbook: P. 17, Continuous problems with principal referrals/ at the principal's discretion to place student in an alternative setting.

District Policy: P. 35, 7701: 10 days in school suspension from classes in a supervised area,

7702: Exclusion from attendance due to detrimental effect on others and to the school education process can be temporary or terminal.

The principal in written report to the superintendent must report all exclusions. If appealed student stays in school until the board makes a decision.

The Principal cannot re-enroll without permission and without written notice from the Superintendent. There must be fulfillment of the original exclusion order.

NRS Statues: 392.465: There must be written evidence in during one school year of behavior threatening to student, teacher, or initiating two fights or 5 suspensions for any reason.

392.466: Can be permanently expelled.

392.070: Alternative schooling or home schooling.

**ALCOHOL, TOBACCO AND OTHER DRUG POSSESSION, USE, ABUSE and PENALTIES POLICY (as set forth by the NIAA):**

*-The following is an excerpt from the NIAA ALCOHOL, TOBACCO AND OTHER DRUG POSSESSION, USE, ABUSE AND PENALTIES POLICY. We have published it in its entirety in our student handbook pgs. 29-37.*

Participation in NIAA sanctioned sports is a privilege and responsibility which requires all participants to adhere to athletic training rules imposed by the school district and member or affiliate school the student attends and represents. The possession or use of any controlled substance, alcohol or tobacco products by a student athlete, whether it occurs on or off of school property, is prohibited and shall result in the penalties set forth herein.

- a. Possession or Use of Tobacco/Alcohol/Controlled Substance/Narcotics. Any student athlete determined to be in possession of, or to have used tobacco, including smoking tobacco, chewing tobacco or snuff, an alcoholic beverage (as defined by NRS 202.020 **and any relevant local ordinances**), controlled substance and/or narcotic (unless prescribed by the student athlete's physician for medical purposes), is in violation of this policy. If after an investigation by the school it is determined that the student athlete is in violation of this regulation the student athlete shall immediately be declared ineligible to compete in any NIAA competition beginning with the first scheduled competition after a violation occurs. Additionally, the student athlete shall be subject to the following discipline:
  1. First Violation: a six (6) competitive week suspension from participation in interscholastic competition beginning with the first scheduled competition after the suspension occurs. Four (4) competitive weeks of the suspension of eligibility may be waived if the student successfully completes all components of the appropriate substance abuse intervention program. The student may practice with the team during the period of suspension if approved by the coach and principal.
  2. Second Violation: The student shall be suspended from interscholastic competition for a minimum of ninety (90) school

days which shall include a minimum of six (6) competitive weeks of competition. The student shall not be allowed to practice with the team, or participate in any out of season activities and must complete the requirements set forth, in order to be considered for reinstatement of future athletic eligibility, which shall be determined following the ninety (90) day suspension of athletic eligibility by a group composed of one of the student's parents/legal guardians, the school principal, athletic director, coach and a substance abuse program coordinator.

3. Third Violation: The student shall be ineligible to participate in interscholastic athletics for the remainder of the student's high school career.

## **ELIGIBILITY**

To participate in any phase of an interscholastic athletic program, a student must meet academic standards as outlined in the NIAA handbook. This applies to players, managers, cheerleaders, drill team members, etc.

A pupil must maintain a passing academic grade and satisfactory citizenship in all courses during the sport season. Progress will be checked on a weekly basis. If the student receives an "F" grade, they are placed on probation for one week. If there is still a failing grade at the end of that week, that student will be declared ineligible for an additional week when their progress will again be reviewed.

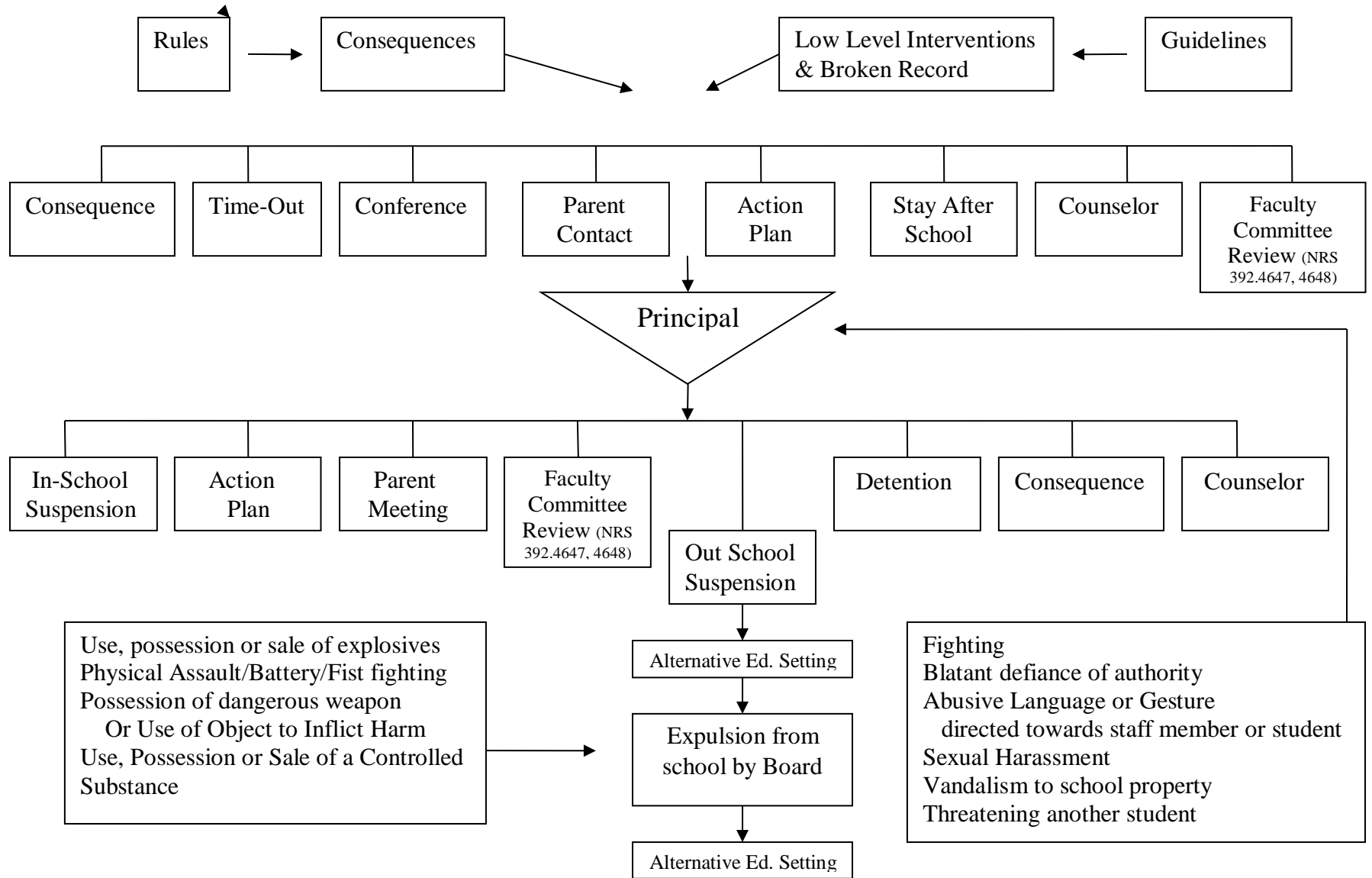
## **CITIZENSHIP RULE**

Students who attend and represent Pahrnagat Valley High School in extracurricular events are held to a higher code of conduct. If a teacher has to remove a student from their classroom and refer them to the office for any disciplinary misconduct, they will be ineligible for the next event.

# DISCIPLINE FLOW CHART

## Pahrnagat Valley High School

Student Name \_\_\_\_\_



# PROBLEM REPORT

## PROBLEM

1. Who was involved? \_\_\_\_\_  
\_\_\_\_\_
2. When? \_\_\_\_\_
3. Where? \_\_\_\_\_
4. What Happened? \_\_\_\_\_  
\_\_\_\_\_
5. Type of discipline problem:  
Threat with a weapon \_\_\_\_\_ Hazing \_\_\_\_\_ Harassing \_\_\_\_\_ Fighting \_\_\_\_\_  
Sexual Harassment \_\_\_\_\_ Physical Injury to Another Student \_\_\_\_\_  
Other (list) \_\_\_\_\_
6. What can be done to solve the problem? (List at least two ideas)  
\_\_\_\_\_  
\_\_\_\_\_  
\_\_\_\_\_

## SOLUTION

1. What will you do? \_\_\_\_\_  
\_\_\_\_\_
2. What would you like the other person(s) to do? \_\_\_\_\_  
\_\_\_\_\_

If parent was contacted, summary of contact: \_\_\_\_\_  
\_\_\_\_\_  
\_\_\_\_\_

Filed by: \_\_\_\_\_ Date: \_\_\_\_\_

# ACTION PLAN

1. What did I do? \_\_\_\_\_

\_\_\_\_\_  
\_\_\_\_\_

2. What else could I have done?

A. \_\_\_\_\_

B. \_\_\_\_\_

C. \_\_\_\_\_

D. \_\_\_\_\_

3. What will I do differently next time? \_\_\_\_\_

\_\_\_\_\_  
\_\_\_\_\_  
\_\_\_\_\_  
\_\_\_\_\_

4. \_\_\_\_\_  
Student Signature                      Staff Signature

\_\_\_\_\_  
Date                                      Date to be renegotiated

## Possible Consequences for Breaking Rules

**Call home** Conference in hall **Clean room** Clean bathroom  
**Late for lunch** More work—different kind **Zero on assignment for that day** Loss of bathroom or hall pass **Monetary penalty** Time out  
**Wash windows** Wash desks **Restricted driving privileges**  
Detention **Keep after school** Crap job of the day **Action plan** Take away points given at the beginning of class **Sit by the teacher** Send to office **Loss of free time** Ground for the last three minutes of class  
**Write appropriate behavior 21 times** Reduction in participation points **Seat assignment** Refuse to accept the daily assignment  
**Name on board** Reduced computer time **Letter or verbal apology**  
Egg timer **Head down on desk** Sunrise school **Saturday school**  
Eat lunch in isolation **Stay after class** “Give me 20” **Double Time**  
Lower grade **Sit on floor** Noon detention **Two students-one story**  
Homework excuse form **Time-out in another classroom**  
Homework needs to be signed by parent **Parent attends class** Sit  
Out Section (SOS) **Appropriate task (shovel snow at school)**  
Talkative ones teach **Fix whatever is broken** Grounded at their desk  
**“Choose your Consequence”** Phone number on board **Child writes letter to parent** Go out in hall and start over **Watch the clock for one minute** Hug the flag pole **Sing your tattle** Students call their parents and explain problem **Change seats** Walk with teacher **“Zero is Class Today” note**



## HOMEWORK EXCUSE FORM

DATE: \_\_\_\_\_ SUBJECT:

\_\_\_\_\_

Reason for my homework not being finished:

\_\_\_\_\_

\_\_\_\_\_

\_\_\_\_\_

\_\_\_\_\_

Student Signature:

\_\_\_\_\_